



# CHISWICK HOUSE FRIENDS

## NEWSLETTER AUTUMN 2016

Charity No 289907

Patron: Lord Burlington



This year we have celebrated the installation of an historic design of bench - shown above - in memory of Ted Fawcett our first Chairman; two new Trustees, our best ever Dog Show and a new decision to sponsor next year's Camellia Show. More inside!

*George Nissen*

## Chiswick House & Gardens Trust News

### Successful Summer of Events

The Trust was delighted to welcome back Gifford's Circus for an extended run as well as The Luna Cinema with their new sell-out FriendsFest, hosted in the Walled Garden. *Summer Sessions* drew large crowds and built on the success of the much-loved Opera nights by adding Ronnie Scott's Jazz, All Saints and a family day. The extended and evolving content of the Gardens event programme has resulted in increased income and the opportunity to reach wider and larger audiences.

For enquiries about hosting and staging events please contact [events@chgt.org.uk](mailto:events@chgt.org.uk)

### More Gold Awards - London in Bloom Heritage Garden of the year 2016



*London in Bloom Awards*

Hot off the press - the Trust collected a number of awards at the prestigious London in Bloom Ceremony, receiving Golds for the Walled Garden and Heritage Garden of the year categories. The estate also won the overall Heritage Garden of the year 2016 in their category.



*CH and Gavin Jones Garden Teams*

Two of the team William Rallison, Community Gardener and Jaimie Cook, Head Gardener from Gavin Jones, picked up the first ever Horticultural Achievement Awards presented by London in Bloom. This is a fantastic accolade and could only

be achieved as a team effort with the Trust gardening team, contractors Gavin Jones and the committed Goosefoots, kitchen gardeners, volunteer wardens, ranger and wildlife volunteers.

Kitchen Garden seasonal produce, herbs and flowers picked by the volunteers are on sale Tuesdays and Thursdays 11:30 - 12:30pm outside the cafe and at the Kitchen Garden 1:30 - 3:30pm (until November).

### CHGT Fundraising

Some Friends have asked why the Trust needs to keep fund-raising.

The Trust is dedicated to the protection and enhancement of this outstanding listed Grade I listed villa and registered Grade I Gardens, which have been enjoyed as a public park since 1929. As a charitable organisation, there is increasing pressure to raise the additional funds that will help deliver sustainability and ensure that the historic importance, quality and enjoyment of the Estate is protected for future generations. The Trust staff hope that the following Q&A session will help to inform readers about the importance of both the Trust's and the Friends' fund-raising events, and the objectives and targets of the current crowd-funding campaign.

### Did you know that each year Chiswick House Gardens cost almost £1m to run?

Each year, Chiswick House and Gardens Trust receives a grant of approximately one quarter of the costs of running the Gardens from the London Borough of Hounslow, and must work hard to raise the remaining three-quarters.

### How does Chiswick House and Gardens Trust raise this additional money?

By running a number of commercial activities. For example, CHGT receives rental income from the café each year, and hire fees from weddings and outsourced events such as Gifford's Circus, the Magical Lantern Festival and *Summer Sessions* in the Gardens.

### How important are local donations?

Chiswick House and Gardens Trust relies on the enthusiasm and goodwill of its 100-strong group of volunteers, and of the Chiswick House Friends. We are extremely grateful for this exceptional and constant support since its activities began in 2010. CHF subscriptions and income from the Dog Show allow it to donate between £15,000 and £20,000 each year. As plans to improve the House and Gardens develop in the coming

months and years, the Trust hopes to continue to encourage and rely on the support of the Friends at about this level each year via their subscriptions and donations.



### **Why does CHGT run fundraising campaigns?**

As described above, CHGT must raise each year money through commercial activities and donations to continue to maintain and improve the Gardens at the existing level. Public campaigns are essential to raise awareness of the costs of maintaining the Gardens for everyone to enjoy, and of the deficit in funding between those costs and what the Trust receives from the various income streams.

### **This year's campaign to raise £20,000**

This year a phased programme of improvements in the Gardens is beginning to:

- Restore the paths to make them more user-friendly for the very young, the elderly and those with disabilities, as well as for general users
- Ensure all the trees are safe and healthy.

Huge thanks to all those who have donated already to our Gardens maintenance crowd-funding campaign! Contributions can be made

by texting chgt50 £5 to 70070 to help fund essential garden maintenance this year.

### **Chiswick House and Gardens Trust**

The Estate Office, Chiswick House,  
London W4 2QN

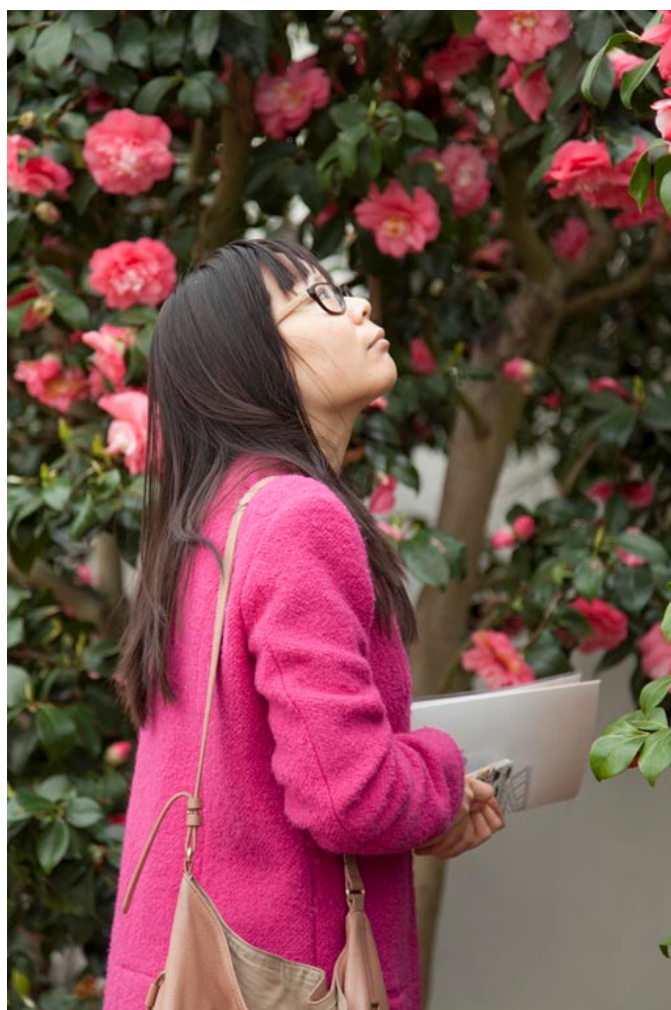
Tel 020 3141 3350

[www.chgt.org](http://www.chgt.org)

### **Friends News**

#### **2017 Chiswick House Camellia Collection**

We are delighted to announce that the Friends are to sponsor the 2017 Chiswick House Camellia Show.



Chiswick House hosts probably the oldest large collection of camellias in Britain. The 6<sup>th</sup> Duke of Devonshire housed his exotic collection of camellias from the 1820s onwards in the conservatory he built at Chiswick. The collection is show-cased each year to over 12,000 visitors from all over the world in early spring, when the blooms are at their best.

***The Chiswick House Camellia Show will run from 3<sup>rd</sup> March to 2<sup>nd</sup> April 2017.***

Contact [diane.schaefer@chgt.org.uk](mailto:diane.schaefer@chgt.org.uk) for further information.

## 12<sup>th</sup> Chiswick House Dog Show

This year's Dog Show surpassed even last year's event, with fine weather and around 5000 visitors. Nearly 700 dogs were entered into 18 classes.

A stellar cast of judges included Ant McPartlin, David Tennant, Michael Ball, Jeremy Vine, Lisa Armstrong and Diana Weston.



*Ant McPartlin and Michael Ball judging the Talent*

The My Dog's Got Talent ring, judged by Ant McPartlin and Michael Ball, saw many demanding turns, from 'General Tricks' to 'Walking and Sleeping'.



*"Go, Rex, go!!"*

The egg-and-spoon race attracted many entrants, some of whom followed the rules.



*Best in Show Winner Amira with owner Sonia Humphries*

Our own brilliant Organising Committee was led by Jan Preece, who commented, "We are thrilled with the response to this year's show. We have had wonderful feedback from visitors and I would like to thank all 190 of our volunteers as well as those local traders who always support us. We are particularly grateful to our main sponsors John D Wood, Fullers and Dog Town. The show has grown into a marvellous event for the whole community to enjoy".

### Wildlife Update (by Richard Sales)

Our own swan (female) flew away in April and did not return until August, again on her own. It is hoped she will entice a male for breeding.

The Egyptian Goose pair had a very successful brood of 7 in March. The female is incubating another brood, which makes three this year.

Mallard, tufted duck, moorhen and coots all bred well, but crows, magpies and our daily visiting heron (Brentford-based) took a toll on numbers.

Cormorants visit here when the lake is full: if anyone catches me near the café, most days around 11.30, I can point out a duplex nesting site of coal and great tits. The kingfisher has only been seen twice this Summer.

### Two New Trustees

We welcome Charlotte Leonard as Hon Treasurer and Angela Purtill as Trustee of the Friends.



Both live in Chiswick and have corporate work backgrounds. Charlotte, on the left above, has been a Friend and Kitchen Garden volunteer for three years: Angela has been a Friend and guide at Chiswick House for six years.

### Remaining 2016 / early 2017 Events

9 Oct, 11-3pm; Kitchen Garden Open Day / Sale

25 Oct; Half term craft workshops (ages 4-11)

16 - 31 Dec; Pop-up Theatre - Cinderella

19 Jan - 26 Feb; Magical Lantern Festival

*Published by the Chiswick House Friends*

57 Thames Village, Hartington Rd, London W4 3UF

[secretary@chfriends.org.uk](mailto:secretary@chfriends.org.uk)

[www.chfriends.org](http://www.chfriends.org)